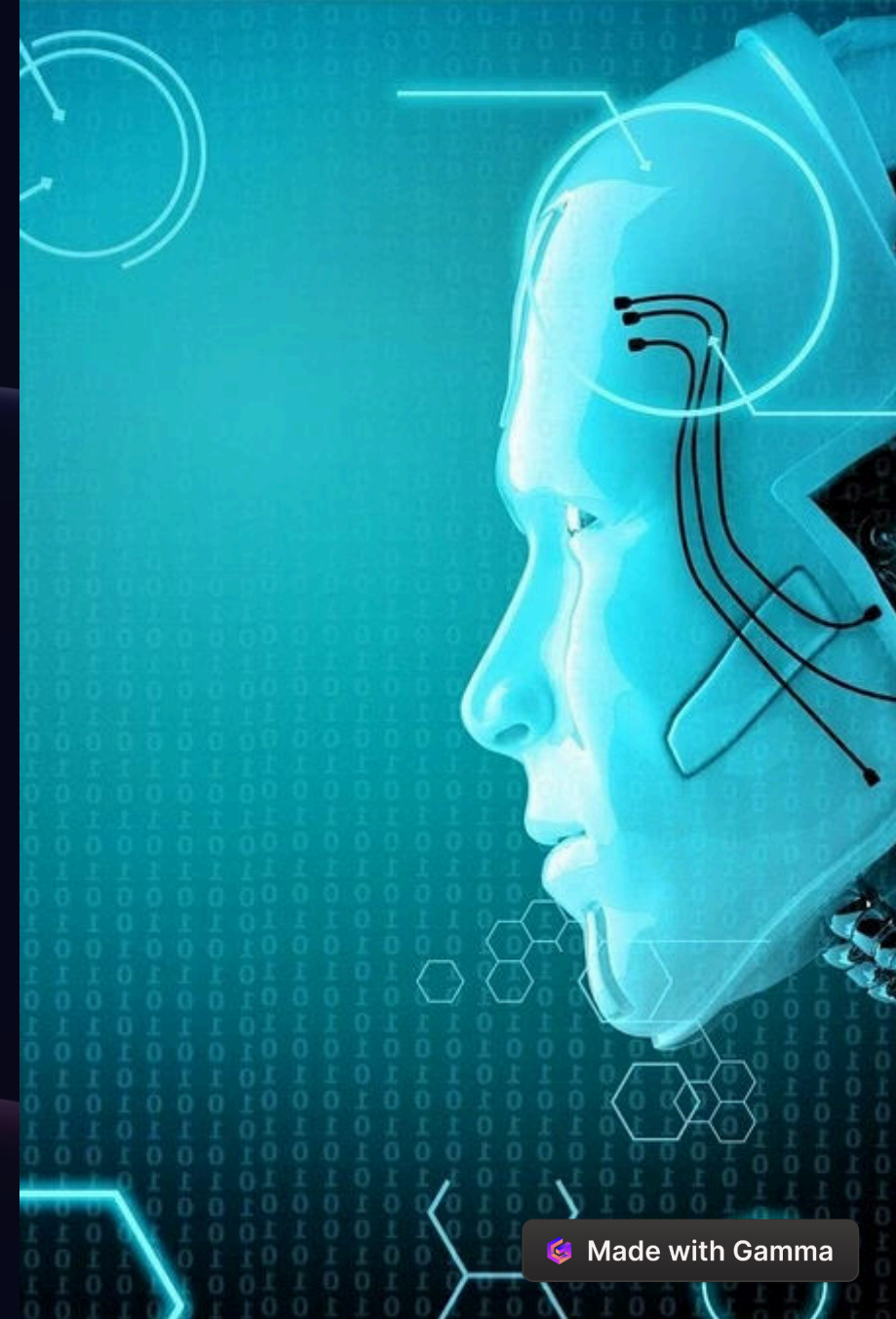
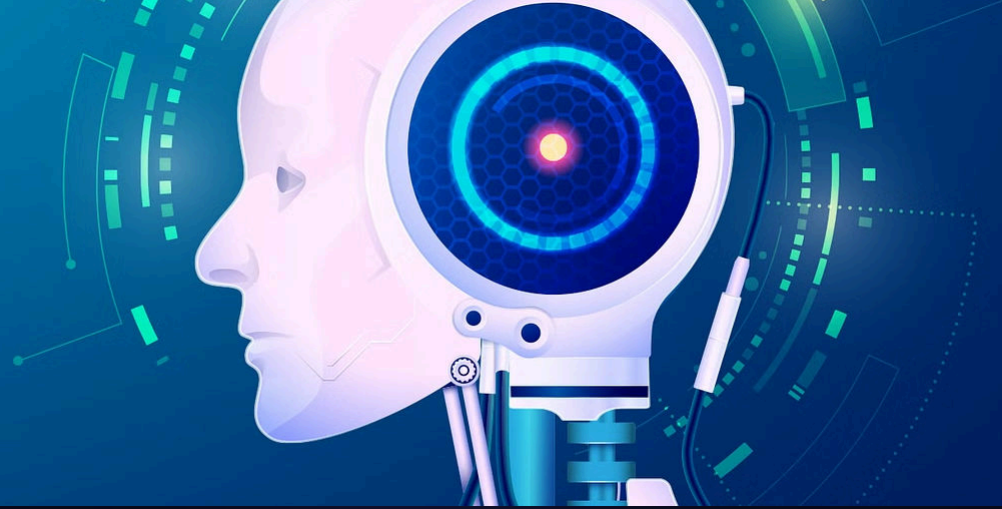


The Key Ethical Considerations of AI

As artificial intelligence (AI) continues to advance, it is crucial to consider the ethical implications of this powerful technology. From bias and transparency to privacy and accountability, there are numerous ethical factors that must be carefully examined.





Bias

1

Data Bias

AI systems can inherit and amplify biases present in the data used to train them, leading to unfair and discriminatory outcomes.

2

Algorithmic Bias

The design and implementation of AI algorithms can inadvertently introduce biases that negatively impact certain individuals or groups.

3

Human Bias

The biases and preconceptions of the humans who develop and deploy AI systems can be reflected in the technology's outputs.

Transparency

Explainable AI

AI systems should be designed to provide clear explanations for their decisions and outputs, allowing for greater accountability and trust.

Algorithm Audits

Regular audits of AI algorithms can help identify and address potential issues, ensuring the technology is operating transparently and ethically.

Public Discourse

Ongoing public dialogue and collaboration between AI developers, policymakers, and the broader community are essential for building transparent and trustworthy AI systems.

A hand is shown holding a glowing blue circuit board pattern, symbolizing technology and data. The background is dark blue with abstract shapes.

Privacy

Data Collection

AI systems often rely on large amounts of personal data, raising concerns about individual privacy and data protection.

Automated Decision-Making

The use of AI in automated decision-making processes can have significant impacts on individuals, underscoring the need for robust privacy safeguards.

Surveillance and Monitoring

The potential for AI-powered surveillance and monitoring technologies to infringe on personal privacy is a pressing ethical concern.

Accountability

1

Responsibility

Establishing clear lines of responsibility for the actions and decisions of AI systems is crucial for ensuring accountability.

2

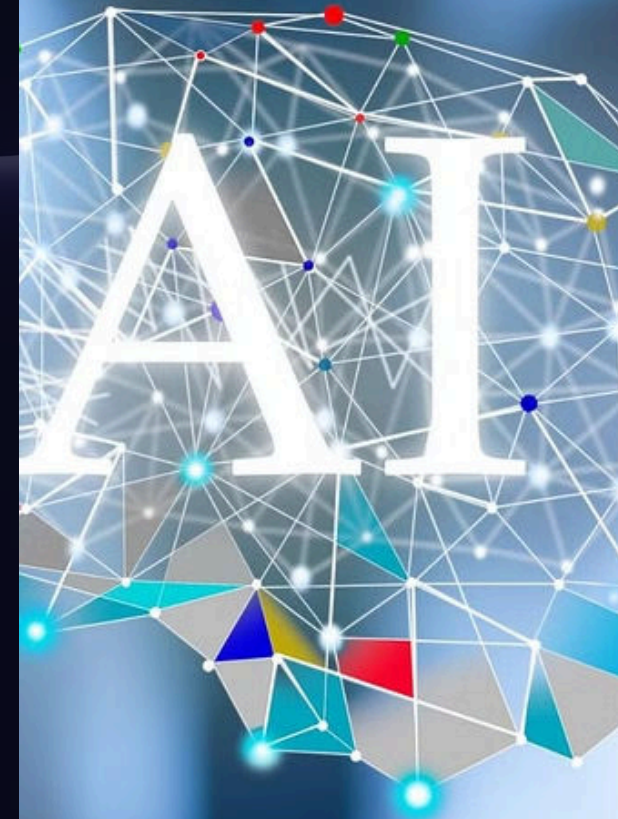
Oversight

Effective oversight mechanisms, such as regulatory frameworks and ethical review boards, are needed to hold AI developers and deployers accountable.

3

Redress

Individuals harmed by AI-driven decisions should have accessible and effective avenues for seeking redress and addressing grievances.



Employment Impact



Automation

AI-driven automation may lead to job displacement, requiring a rethinking of education, training, and social safety nets.



New Job Creation

AI may also create new job opportunities, but the transition may be challenging for affected workers.



Reskilling

Effective policies and programs to support worker reskilling and lifelong learning will be crucial in addressing AI's impact on employment.

Final Words

Are you researching AI applications for your business? This is a great first step! However, building your own ethical AI solution can be a complex endeavor. Consider partnering with a reputable [AI development company](#) that prioritizes ethical practices. We offer comprehensive support throughout the development process, ensuring your AI integration aligns with ethical principles. Our best-in-class development services go beyond technical expertise; we work closely with you to understand your business goals and ensure your AI solution is built on a foundation of fairness, transparency, and user privacy.

Contact Us

For more information on the ethical considerations of AI, please visit our website at <https://www.osiztechnologies.com/ai-development-company>.

or contact us at sales@osiztechnologies.com

